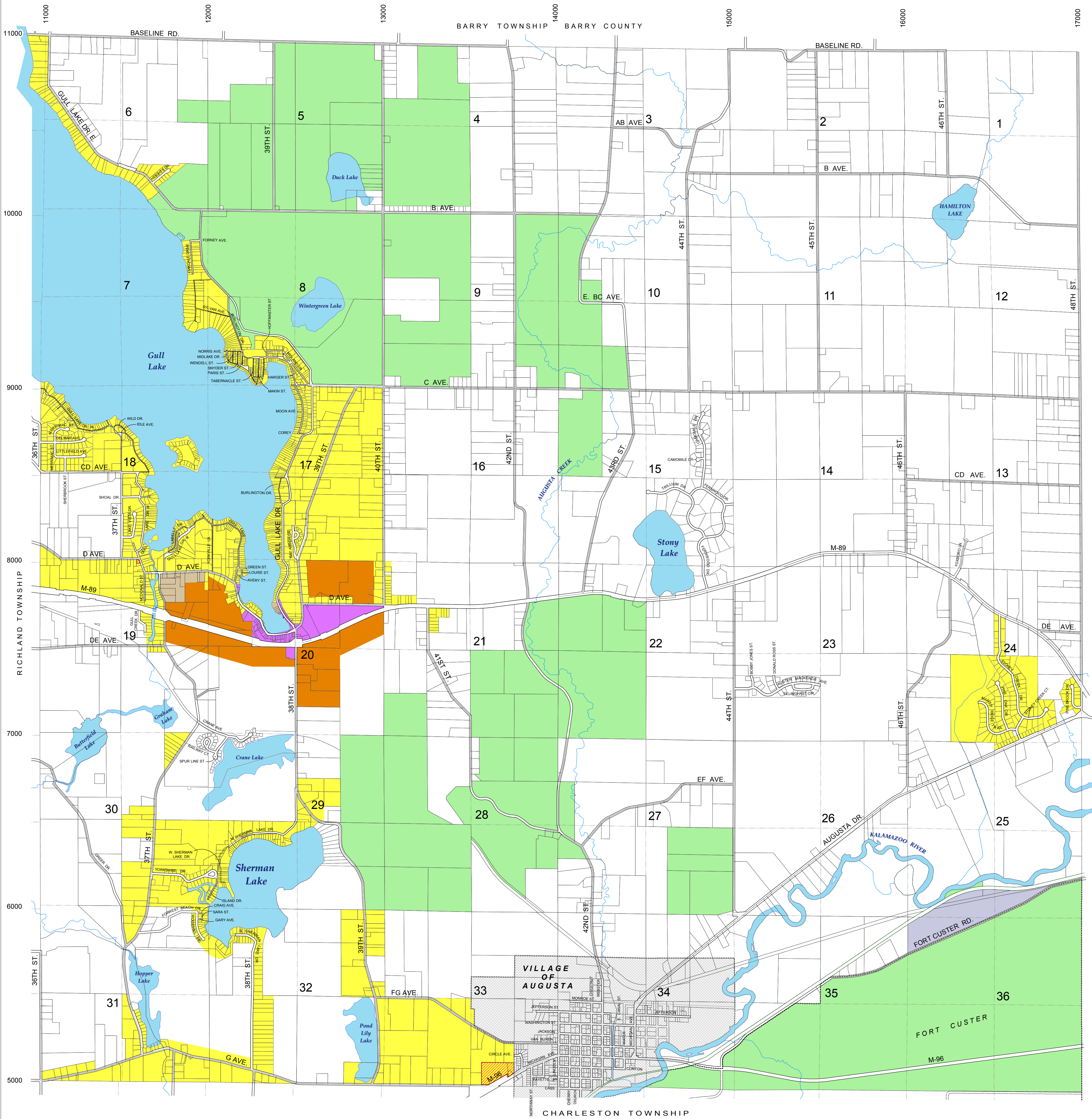


Ross Township

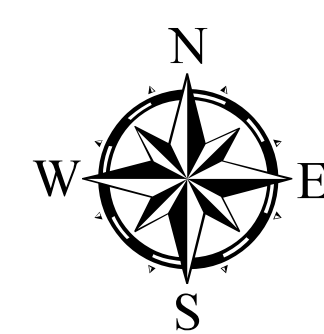
Kalamazoo County, Michigan

Zoning Map



LEGEND

- AG Agricultural Preservation District
- R-R Rural Residential District
- R-1 Low Density Residential District
- R-2 Medium Density Residential District
- R-3 High Density Residential District
- R-4 Mobile Home Park District
- C-1 Bay Commercial District
- I-R Restricted Industrial District
- C-2 Neighborhood Commercial Overlay District



1,500 750 0 1,500 Ft
Scale: 1" = 1,500'

- Public R.O.W.
- Private R.O.W.
- Railroad R.O.W.

Revised through Ordinance No. 196
Effective: March 27, 2015